



**REPORTING ON  
PROGRESS TOWARDS  
THE ACHIEVEMENT OF  
COMMUNITY  
OUTCOMES**

**HUTT CITY 2003-2006**

INTRODUCTION ..... 3

THE OUTCOMES ..... 4

    Outcome One: Clean Air, Water And Land..... 4

    Outcome Two: Everyone Has Affordable Access To Services That Improve Health  
..... 10

    Outcome Three: A City That Is Safe, Friendly And Welcoming, Where People  
Experience A Sense Of Belonging ..... 16

    Outcome Four: Everyone Has Affordable Access To Excellent Educational  
Services ..... 26

    Outcome Five: Everyone Has A Quality Standard Of Affordable Housing..... 29

    Outcome Six: A Local Economy That Is Attractive To Both Business And  
Residents ..... 33

    Outcome Seven: Affordable Access To Community Facilities That Includes Arts,  
Cultural And Recreational Options..... 39

    Outcome Eight: A Diverse Natural Environment That Is Accessible, Enjoyable  
And Safe..... 41

    Outcome Nine: A Healthy Balance Between Natural And Built Environments .... 45  
And..... 45

    Outcome Ten: A Built Environment That Is Attractive, Safe And Healthy ..... 45

CONCLUSION ..... 47

## INTRODUCTION

The Local Government Act 2002 (the Act) requires local authorities to consult with the community to identify and prioritise community outcomes.

Comprehensive research was carried out in 2002 in response to Hutt City Council's first Long Term Council Community Plan (Community Plan). This included discussion with residents and special interest groups, and gave members of the community an opportunity to talk about community outcomes and priorities in depth, and then provide detailed feedback.

A questionnaire was included in the monthly Hutt News supplement "Hutt on the Edge", asking residents to rank the community outcomes they considered the most important. All the information collected, including information consulted on in the Draft Community Plans between 2003 and 2006, was incorporated into the final set of community outcomes adopted for this period (printed below).

Section 92 of the Act requires Authorities to monitor and, not less than once every three years, report on the progress made by the community in achieving the outcomes. In compliance with this statutory requirement, Hutt City Council (Council) has prepared this document to highlight the progress made in achieving the outcomes identified by its residents.

Much of the work carried out by Council that contributes to the achievement of community outcomes could be categorised as core business. However, Council is not solely responsible for the delivery of the community outcomes. Rather, Council works with the community, key organisations and stakeholders to achieve the community outcomes together.

The following pages provide information about how Council has worked with other organisations to achieve progress on the community outcomes. The agencies involved work across a range of activities and outcomes and a sample only is included in the following pages. This should not be interpreted as a definitive list as Council works at many levels with a wide range of organisations, community groups and individuals. In the future Council will continue to work with local and regional organisations, central and local government and the private sector to achieve the community outcomes.

While this report covers the period 2003 to 2006, the data is not always available for all these years, or the only data available is for 2007. The report contains data from a wide variety of resources, mostly published on the internet. For ease of reference, footnotes contain the web links to the information as well as the source. Hutt City Council will not be liable for the accuracy of any third party data presented in this report or for any loss suffered through the use, directly or indirectly, of any information, product or service. The information contained in this report will be used as a baseline against which future reporting by the Council will be undertaken.

## THE OUTCOMES

### ***Outcome One: Clean Air, Water And Land***

Council's objective is to ensure that the quality of air, water and soil is kept within acceptable levels in the district. Mechanisms for addressing this include the District Plan, Waste Management Plan, Bylaws and environmental education programmes with Council's partners in the community. These include Earthlink, schools and businesses, Upper Hutt City Council and the Wellington Regional Environmental Agency.

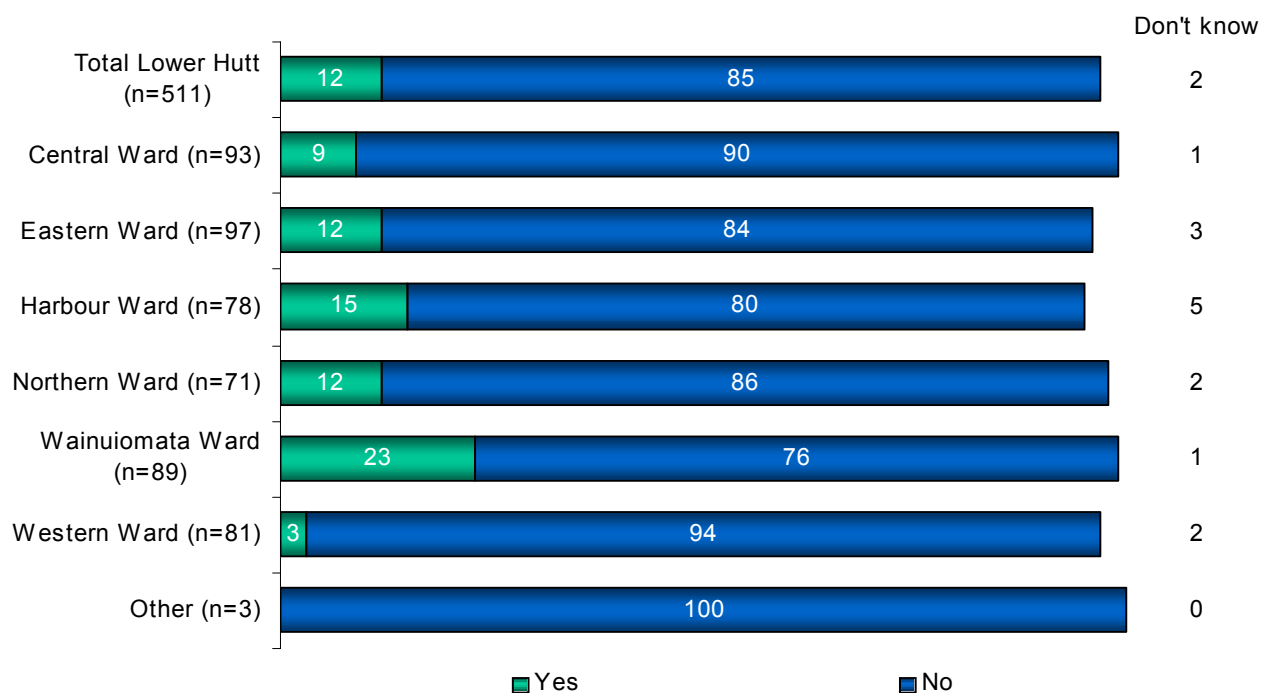
While progress on this outcome may be evaluated in terms of both the city's compliance with physical standards and published guidelines on pollutant levels in air, water and soil, it is also important to examine public perceptions of pollution. The *Quality of Life Survey 2006*<sup>1</sup> included a question on perceptions of air pollution and a question on perceptions of water pollution.

### **PERCEPTUAL MEASURES**

#### ***Perception of Air Pollution***

In the survey, around one tenth (12%) of the residents felt air pollution had been a problem within Hutt City in the preceding 12 months.

#### ***Perception of Air Pollution – By Ward (%)***



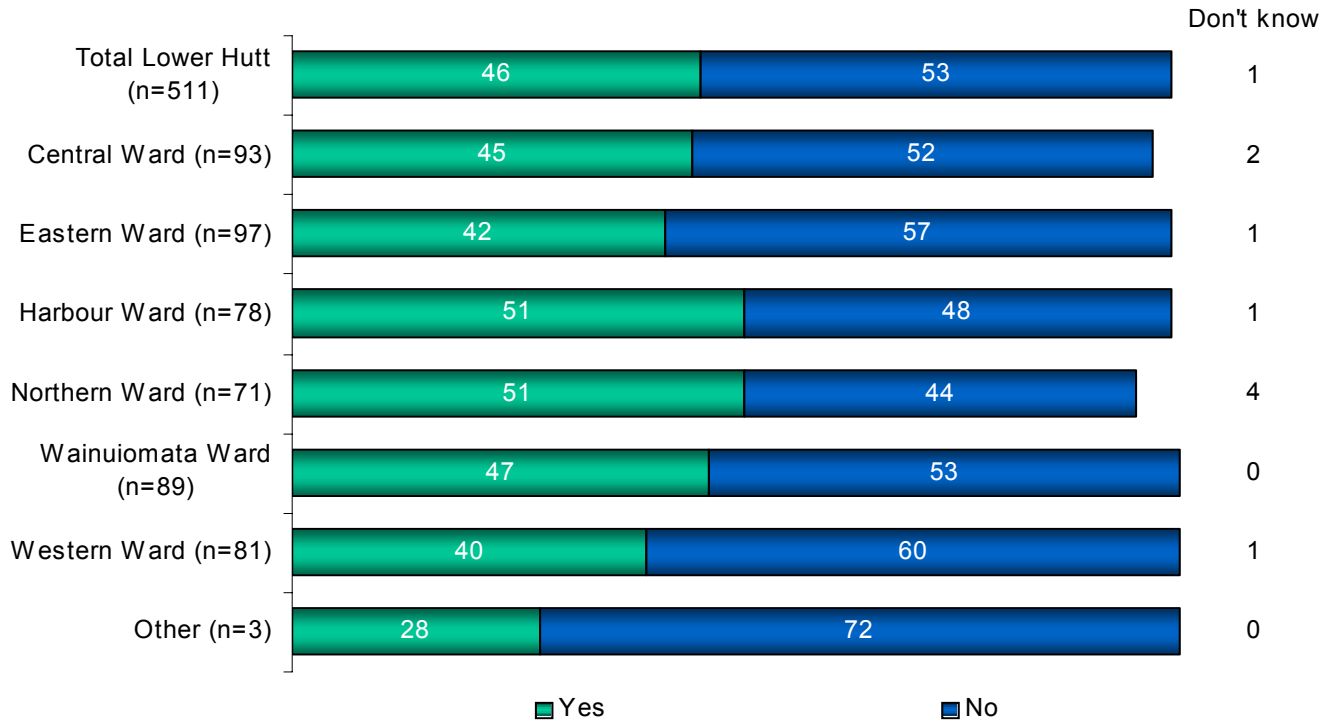
*Base: All respondents*

<sup>1</sup> *Quality of Life Survey 2006*, carried out by TNS NZ Limited on behalf of the Twelve Cities Quality of Life project.

## Perception of Water Pollution

In terms of water pollution, nearly half (46%) of the residents felt water pollution (in streams, rivers, lakes and the sea) had been a problem within Hutt City in the preceding 12 months. Water pollution is perceived to be a much bigger issue than air pollution.

### Perception of Water Pollution – By Ward (%)



Base: All respondents

## PHYSICAL MEASURES

### Air Quality Measures

The Quality of Life in Twelve New Zealand Cities Report lists a number of physical measures to assess air quality in Hutt City<sup>2</sup>. These are:

- Annual average levels of suspended particles (PM<sub>10</sub>) (exceedances of 12 month maximums)
- Annual average levels of carbon monoxide (CO) (exceedances of 12 month maximums)
- Annual average levels of nitrogen dioxide (NO<sub>2</sub>) (exceedances of 12 month maximums)

Suspended particles (PM<sub>10</sub>) are particles suspended in the air that have a diameter of less than 10 microns. High concentrations of these smaller particles can penetrate the lungs and damage respiratory tissues. The main source of these particles is solid fuel burning for domestic heating, and consequently, levels in winter are higher than those observed during the summer months.

<sup>2</sup> Quality of Life Report In Twelve New Zealand Cities 2007. This section of the report cites data and information from Environet Ltd and Ministry for the Environment.

According to the Ministry for the Environment, sources of carbon monoxide concentrations usually include motor vehicle emissions, domestic home heating, outdoor burning and industry. Health effects associated with low levels of exposure to CO include headaches, dizziness and nausea, and can result in confusion, problems with dexterity, learning ability, and the ability to perform sensorimotor tasks. At very high levels of exposure to CO, coma, collapse, loss of consciousness and death can occur.

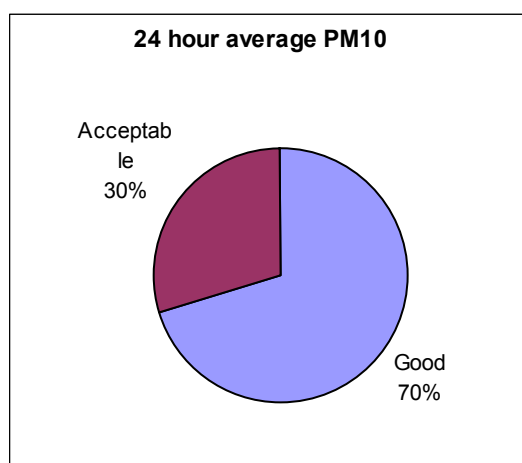
**Maximum Number of Annual Exceedances of National Standards Levels for Suspended Particles, Carbon Dioxide and Nitrogen Dioxide.**

	2003	2004	2005
	Annual average ( $\mu\text{gm}^{-3}$ )	Annual average ( $\mu\text{gm}^{-3}$ )	Annual average ( $\mu\text{gm}^{-3}$ )
National Environmental Standards for levels of suspended particles (PM <sub>10</sub> )	14	15	14
National Environmental Standards for levels of carbon monoxide (CO)	3	3	2
National Environmental Standards for levels of Nitrogen Dioxide (NO <sub>2</sub> ) <sup>3</sup>	83	89	55

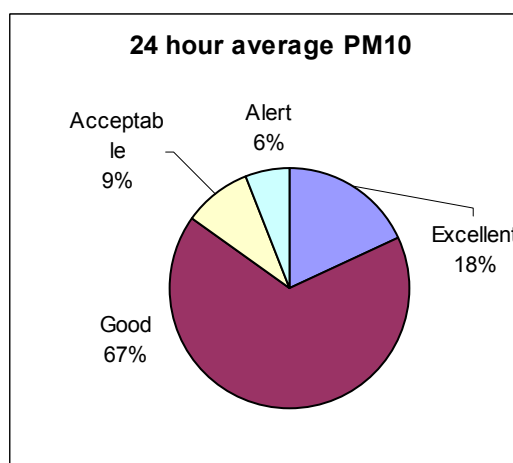
**Air Quality in Hutt City**

Greater Wellington monitors air quality in the city at two sites. One is situated in Birch Street near the Waterloo Interchange (referred to as Lower Hutt) and the other is in Wainuiomata. The Lower Hutt monitoring station collects data on three different variables: particulate matter (PM10), carbon monoxide (CO) and nitrogen oxide (NO<sub>2</sub>). The Wainuiomata monitoring station collects PM10 data only, and takes readings approximately every third day.

**Lower Hutt**



**Wainuiomata**



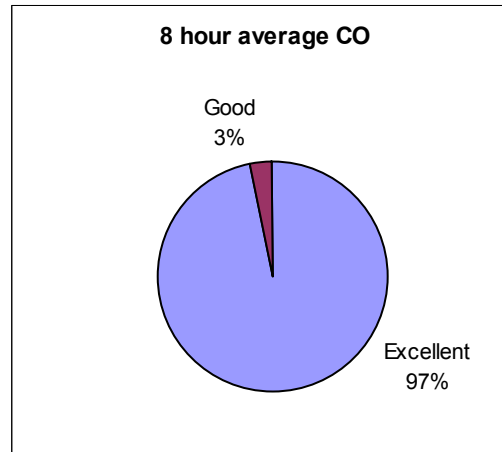
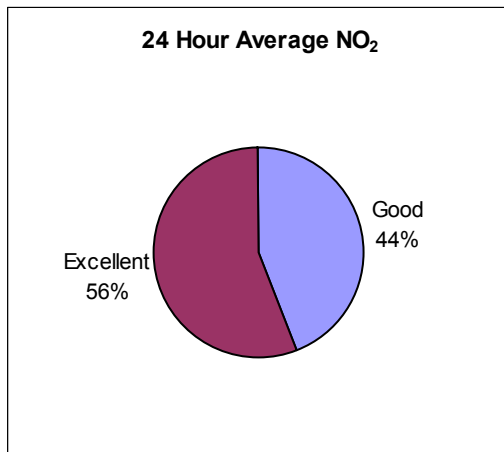
The results are shown in terms of the percentage of time that readings fell in certain air quality categories.

<sup>3</sup> Provisional data only as the method of data processing has changed. Data is from the *Quality of Life in Twelve New Zealand Cities Report 2007*.

The categories are Excellent, Good, Acceptable, Alert and Action. They relate to national standards and guidelines for ambient air quality. The “Alert” category means that the level reached is between 66% and 100% of the maximum acceptable level specified in the relevant national standard or guideline. The results suggest there are air quality issues and potential for adverse human health effects in Wainuiomata, particularly during winter months.

**Lower Hutt**

**Wainuiomata**



Results of CO and NO<sub>2</sub> monitoring at Lower Hutt show concentrations of both variables to be well within acceptable levels. Both variables register higher levels during the winter months. These results are similar to previous years.

**Water Quality in Hutt City**

**Coastal and Freshwater Quality (2003 to 2007)**

	Coastal beaches		Freshwater beaches	
	Number of beaches monitored	Percentage of samples exceeding guidelines <sup>4</sup>	Number of beaches monitored	Percentage of samples exceeding guidelines <sup>5</sup>
Wellington Region	76	4.0	23	8.0

Bathing water quality is generally poorer at inland freshwater sites than coastal sites because there is less dilution and dispersal of contaminants<sup>6</sup>.

**Water Quality**

The Macroinvertebrate Index (MCI) was developed in New Zealand and is widely used to measure water quality. The MCI is measured annually as most invertebrates

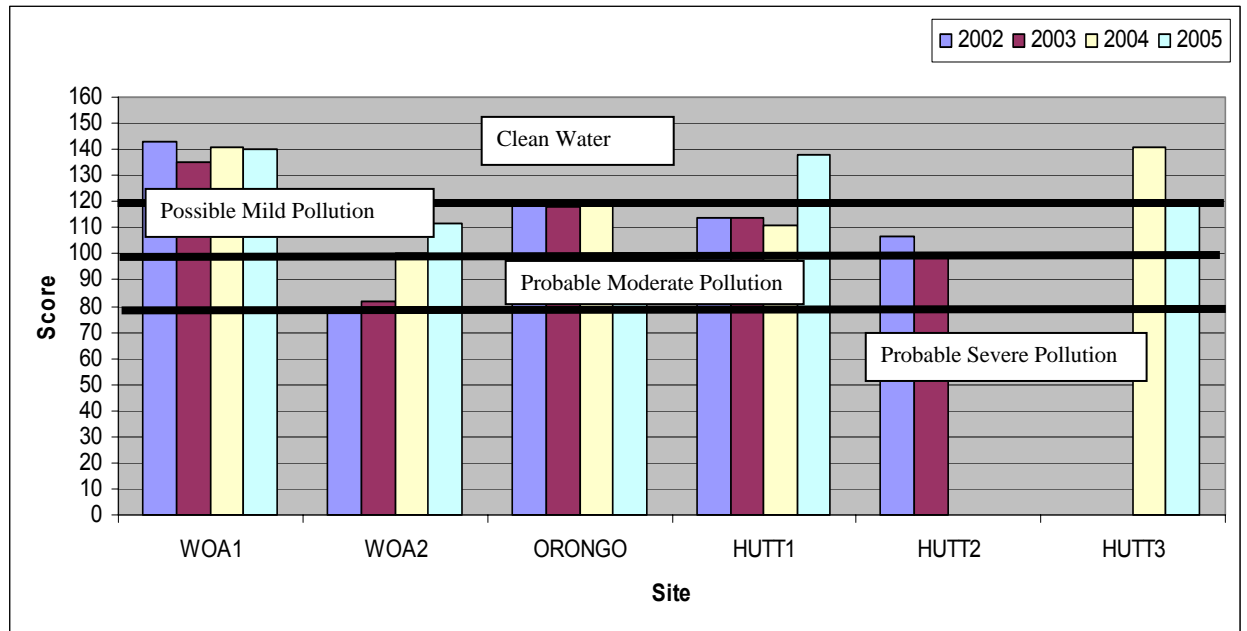
<sup>4</sup> Exceeding levels for coastal waters is a single sample greater than 280 enterococci per 100mls.

<sup>5</sup> Exceeding levels for freshwater is a single sample greater than 550 *E.coli* per 100 mls.

<sup>6</sup> Quality of Life Report.

have annual life cycles. The results of the MCI reflect the quality of the water over a number of months, as invertebrates must survive in the waterway for their entire life cycle. MCI scores are expected to decrease as sampling sites move downstream due to differences in stream habitats (ie. warmer water, less shading).

**Macro Invertebrate Index (MCI)**



**Sampling Sites:** Two on the Wainuiomata River: WOA1 at Manuka Track and WOA2 at White Bridge; Orongorongo River near the river mouth; three on the Hutt river: HUTT 1 near Manor Park, HUTT 2 at Melling and HUTT 3 at Boulcott.<sup>7</sup>

The quality of water in the Wainuiomata River continues to improve. Samples taken from near White Bridge (WOA2) indicate possible mild pollution, a steady improvement from probably severe pollution in 2002. This is due to sewage no longer being discharged into the river. Samples taken near Manuka Track (WOA1) continue to indicate clean water.

Readings on the Hutt River at Manor Park (HUTT1) also indicate clean water, an improvement on 2004. Meanwhile, there has been a drop in water quality at the sampling site near the Boulcott Golf Course (HUTT3) from clean water to possible mild pollution. There has also been a drop in readings registered at the Orongorongo River mouth (ORONGO), with samples now indicating probable moderate pollution.

**Drinking water quality**

<sup>7</sup> Data supplied by Greater Wellington Regional Council.

Water quality has been a subject of much discussion in Hutt City, with various parties opposing and promoting fluoridated or unfluoridated water.

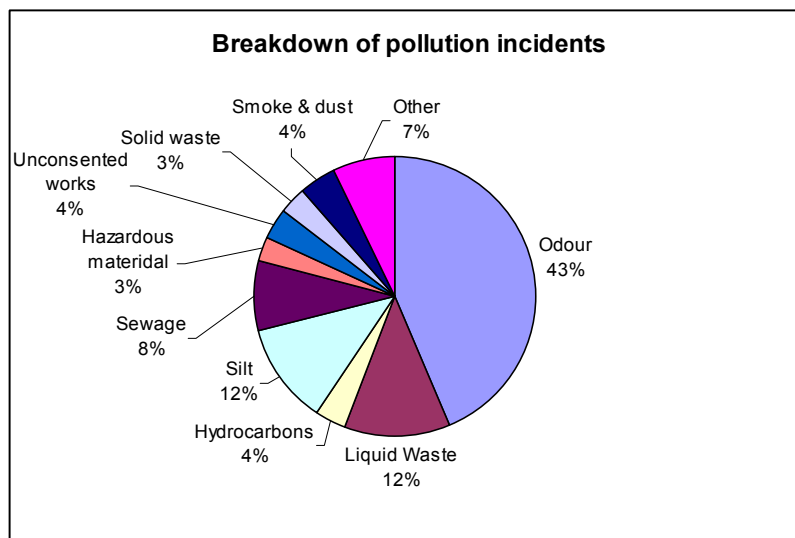
The quality of a city's water supply is affected by stress placed on waterways through single discharge points (such as stormwater discharge and treated wastewater effluent) as well as non-point discharge such as agricultural run-off from dairy farms. The Quality of Life Report includes a water quality grading in May 2007 of B<sup>8</sup> for Hutt for its water treatment plant. A grading of B means "Satisfactory, very low level of risk when the water leaves the treatment plant".

### ***E.coli compliance of water distribution zones (drinking water)***

The Ministry of Health has developed standards for drinking water. Hutt City's drinking water complies 100% with the E.coli standards.<sup>9</sup>

### ***Pollution Incidents<sup>10</sup>***

Greater Wellington Regional Council monitors pollution within Hutt City. In the 2004/2005 financial year there were 306 pollution incidents within Hutt City compared to 269 in the previous year. Incidents relating to odour are by far the most common incident type. While their numbers increased from 130 in 2003/04 to 149 in 2004/05, as a percentage of total pollution incidents odour decreased from 55% to 43%. The "Other" category includes natural occurrences, dead animals, vehicles and all other incidents.



Data supplied by Greater Wellington Regional Council

<sup>8</sup> Data source: [www.drinkingwater.co.nz](http://www.drinkingwater.co.nz). The default method of summarising multiple drinking water zones to arrive at a single grading for a whole city is to use the grading from the worst zone in that city.

<sup>9</sup> Data source: Water Information New Zealand, cited in the Quality of Life Twelve Cities New Zealand 2007 report.

<sup>10</sup> Source: Hutt City Council Annual Report 2006

## ***Outcome Two: Everyone Has Affordable Access To Services That Improve Health***

Council's objective is to achieve a healthy urban environment, and increased community awareness and involvement in health issues. Council has worked closely with the Hutt Valley District Health Board, Primary Health Organisations, community and government agencies to promote opportunities for community access to health information, identify and address barriers in accessing health services, access central government funds and programmes, and participate in health related projects.

The Hutt Valley is served by a major local hospital, an after hours medical centre that is open between the hours of 5pm to 6am, and a large number of pharmacies. The tables below show some statistics relating to medical services in Hutt City and the Hutt Valley, but it should also be noted that access by residents to recreational facilities, as reported further below, is also a factor in providing services that improve health.

### ***Access to Medical Services***

The table below reports the number of General Practitioners according to the 2005 survey by the Medical Council of New Zealand. The table shows that Hutt City had 55 GPs per 100,000 people in 2005, compared with 85 GPs for Wellington City. In addition to GPs, the Medical Council survey found 190 doctors in Hutt City in general, compared with 714 in Wellington City, but almost four times as many doctors as in Porirua City and eight times as many doctors as those in Upper Hutt. By comparison with the rest of New Zealand, Hutt City has fewer GPs per 100,000 and a smaller number of doctors in general than the national average.

### ***Medical workforce by Territorial Authority of main work site (2005)***

	No. of GPs	FTEs GPs <sup>1</sup>	FTEs per 100,000	Ave hours GPs <sup>2</sup>	No. of all doctors	No. of doctors per 100,000	Overseas trained doctors % of all	Territorial authority population <sup>3</sup>
Hutt City	57	55	55	39	190	189	39	100,500
Porirua City	27	26	52	40	55	109	49	50,500
Upper Hutt City	22	19	50	35	25	66	48	37,900
Wellington	171	157	85	37	714	386	28	185,100
Total	2,924	2,850	70	37	8,746	213	38	4,097,080

<sup>1</sup> The calculation of GP FTE includes all hours recorded in at site1, site2 and site3 where GP is the role at that work site.

<sup>2</sup> The calculation of Average hours GP uses the total hours worked by each doctor where their site1 work role is GP. This may include hours worked at other work sites where the work role was not GP.

<sup>3</sup> Statistics New Zealand, Estimated Residential Population as at 30 June 2005.

Source: The New Zealand Medical Workforce in 2005  
[www.nzdoctor.co.nz/filedownload?id=9a94ac28-b744-458e-9b0b-5724bfee6264](http://www.nzdoctor.co.nz/filedownload?id=9a94ac28-b744-458e-9b0b-5724bfee6264)

### Primary Health Organisations

There are six Primary Health Organisations in Hutt Valley. Together the PHOs include 31 medical centres located within the district with total enrolments representing about 96% of the Hutt Valley District Health Board's total population<sup>11</sup>.

The cost of services at each of the six PHOs varies considerably. However, the introduction of PHOs has made primary care in the Hutt Valley considerably more affordable than in the past. The tables below show the patient charges for each PHO<sup>12</sup>.

#### *Piki te Ora ki te Awakairangi's GP Practices and the Maximum Fees set for their Enrolled Population*

Practice	Max fee	Max fee	Max fee	Max fee
	under 6 years	6 - 17 years	18 - 64 years	65+ years
Whai Oranga O Te Iwi Health Centre	Free	Free	\$10	\$0
Petone Union Health Services	Free	Free	\$10	\$0
Pomare Union Health Service	Free	Free	\$10	\$0

#### *MidValley Access PHO's GP Practices and the Maximum Fees set for their Enrolled Population*

Practice	Max fee	Max fee	Max fee	Max fee	Max fee	Max fee
	under 6 years	6 - 17 years	18 - 24 years	25- 44 years	45-64 years	65+ years
Naenae Medical Centre	\$2	\$17	\$22	\$22	\$22	\$22
Stokes Valley Health Centre	Free	\$15	\$22	\$22	\$22	\$22
Taita Medical Centre	Free	\$15	\$22	\$22	\$22	\$22

<sup>11</sup> <http://www.huttvalleydhb.org.nz/Resource.aspx?ID=963>. Hutt Valley District Health Board 2006 Annual Report.

<sup>12</sup> Hutt Valley District Health Board: <http://www.huttvalleydhb.org.nz/Article.aspx?ID=657>

Tamaiti Whangai PHO has an enrolled population of 4,800. This population receives medical services at the Waiwhetu Medical Centre (Waiwhetu) and the Waiwhetu Medical Centre (Petone). The Maximum Fees set for their Enrolled Population are:

	<b>Under 6 years</b>	<b>6 -17 years</b>	<b>18-24 years</b>	<b>25-44 years</b>	<b>45-64 years</b>	<b>65 + years</b>
Community Services Card Holders	Free	\$15	\$20	\$26	\$22	\$15
Non-CSC Holders	Free	\$15	\$20	\$34	\$22	\$15

***Ropata Community PHO's GP Practices and the Maximum Fees set for their Enrolled Population***

<b>Practice</b>	<b>Max fee</b>	<b>Max fee</b>	<b>Max fee</b>	<b>Max fee</b>	<b>Max fee</b>	<b>Max fee</b>
	<b>under 6 years</b>	<b>6 - 17 years</b>	<b>18 - 24 years</b>	<b>25- 44 years</b>	<b>45-64 years</b>	<b>65+ years</b>
Ropata Medical Centre	\$10	\$30	\$30	\$30	\$30	\$30

***There are 21 medical practices from throughout Upper and Lower Hutt involved in Valley PHO. The Maximum Fees set for their Enrolled Population are shown below.***

<b>Practice</b>	<b>Max fee under 6 years</b>	<b>Max fee 6 - 17 years</b>	<b>Max fee 18-24 years</b>	<b>Max fee 25-44 years</b>	<b>Max fee 45-64 years na *</b>	<b>Max fee 65+ years</b>
Avalon Medical Centre	\$10	\$25	\$25	\$48	\$22	\$23
Eastbourne Medical Centre	\$7.50	\$25	\$30	\$60	\$30	\$30
Epuni Medical Centre	\$5	\$20	\$22	\$50	\$22	\$22
Fergusson Drive Surgery	\$10	\$30	\$28	\$52	\$25	\$27
Fitzherbert Rd Medical	\$2	\$23	\$24	\$45	\$22	\$22
Kopata Medical Centre	\$10	\$28	\$28	\$55	\$28	\$28
Main Street Surgery	\$9	\$24	\$25	\$50	\$23	\$24

Manuka Health Centre	\$5	\$27	\$32	\$59	\$32	\$32
Moera Medical Centre	Free	\$10	\$20	\$20	\$20	\$20
Muritai Health Centre	\$14	\$29	\$29	\$56	\$29	\$29
Petone Medical Centre	Free	\$10	\$15	\$40-\$45	\$20	\$20
Pretoria Street Surgery	\$14	\$29	\$30	\$54	\$27	\$29
Queen Street Surgery	\$5	\$25	\$25	\$50	\$23	\$25
Richmond Street Surgery	\$10	\$27	\$30	\$57	\$30	\$30
The Doctors, Silverstream	\$5	\$22	\$25	\$50	\$23	\$25
Dr Hans Snoek	\$10	\$29	\$29	\$54	\$27	\$28
Soma Medical Centre	Free	\$20	\$20	\$50	\$23	\$20
Strand Care	\$5	\$25	\$26	\$50	\$23	\$23
The Doctors Main Street Upper Hutt	\$5	\$22	\$25	\$50	\$23	\$25
Trentham Medical Centre	\$10	\$25	\$25	\$52	\$25	\$25
Waterloo Surgery	Free	\$22	\$26	\$52	\$25	\$26

**n.a. – Not Applicable:** High level capitation rates do not apply for the 25 to 44 age group for Interim PHOs. Valley PHO is not required to agree fee levels for this age group with Hutt Valley DHB until such time as the Interim formula is brought into line with the Access formula.

***FamilyCare PHO enrolled patients who pay on the day of consultation during the day clinic receive the following discounted rates.***

Aged	Aged	Aged	Aged	Aged	Aged
Under Sixes	6 to 17	25 to 44	25 to 44	45 to 64	65 and over
Free	\$26	\$40	\$55	\$28	\$22
		(CSC holders)	(non-CSC holders)		

In addition to the clinics forming the above PHOs, there are over 20 pharmacies located in Hutt City.

## Hospital Service Indicators<sup>13</sup>

	2003/04	2004/05	2005/06
Inpatient discharges	17,571	17,243	17,236
Day case discharges	9,364	9,349	9,397
Total discharges (including newborns)	26,935	26,592	26,633
Discharges per day	73.8	72.9	73
Available bed days (including cots)	91,615	93,075	93,075
Occupied bed days	78,876	79,084	80,863
Average occupancy	86.10%	85.00%	86.90%
Inpatient operations	5,012	5,319	5,299
Day patient operations	2,244	2,281	2,217
Total operations (theatre cases)	7,256	7,600	7,516
Elective operations	3,405	3,412	3,288
Acute operations	3,851	4,188	4,228
Total operations (theatre cases)	7,256	7,600	7,516
Inpatient Waiting list total at 30 June	1,263	1,407	1,322
Outpatient Attendances			
• Surgical	46,255	46,761	46,204
• Medical	17,754	18,959	20,901
• Paediatric	4,249	4,568	5,032
Emergency Department			
• First attendances	30,748	33,397	35,219
• Total attendances	31,741	34,254	35,730
Community Contacts			
• District nursing	34,893	35,461	35,706
Births - Hutt Hospital	1,979	2,126	2,209
Radiology examinations	48,461	49,772	49,787
Laboratory tests performed	621,398	788,016	836,034

## Meningococcal Vaccinations

According to the Hutt Valley District Health Board, the Hutt Valley Meningococcal B campaign was extremely successful and well above the national average coverage rate, reaching over 88% for 5 to 17 year olds and over 76% for the under five age group. Similarly, the Hutt Valley results were above the national average for Māori and Pacific children and young people<sup>14</sup>.

<sup>13</sup> <http://www.huttvalleydhb.org.nz/Resource.aspx?ID=963>. Hutt Valley District Health Board 2006 Annual Report.

<sup>14</sup> <http://www.huttvalleydhb.org.nz/Resource.aspx?ID=963>. Hutt Valley District Health Board 2006 Annual Report.

## Elderly Care

The ageing population of New Zealand means that regions need to ensure that adequate facilities are developed to cater for increasing elderly populations. The figures below show that the number of beds available for elderly care has increased somewhat in the Hutt Valley over the past four years. However, it is important to note that the elderly population has also increased over this time.

Occupancy for 2006/07 shows similar patterns to that in 2005/06.

Level of care	Contracted number of beds 2003	Contracted number of beds 2007	Average Occupancy Feb – June 2007
Rest home	557	519	95%
Hospital	318	413	97%
Dementia	59	77	100% *
Psychogeriatric	40	54	100% *
Total	974	1063	

\*Dementia and psychogeriatric operate close to full occupancy levels. These beds provide services for people outside the Hutt Valley region.

Source: Hutt Valley District Health Board

	Number of residents aged 65 or over (Lower Hutt and Upper Hutt)	Ratio of Residential Beds To Elderly Population of Hutt Valley
<b>2001 Census</b>	14,367	6.8% (approximately 1 bed for every 15 elderly residents)
<b>2006 Census</b>	15,450	6.9% (approximately 1 bed for every 14 elderly residents)

### ***Outcome Three: A City That Is Safe, Friendly And Welcoming, Where People Experience A Sense Of Belonging***

Council's objective is to provide a safe place for residents, businesses and visitors through providing and developing safe public places, accessing central government funds and programmes, and promoting personal safety activities and initiatives along with its partners in the community, including the Police, Accident Compensation Corporation and Child, Youth and Family. In addition Council aims to provide a place where people feel a sense of belonging, and promotes a range of events, facilities and projects or programmes with this in mind. Nga Tekau o Poneke - the Wellington Tenth Trust, Te Runanganui o Taranaki Whanui ki te Upoko o te Ika a Maui and Te Taurahere o Te Awakairangi, along with the large number of Pacific Island, Asian and other ethnic groups within the city, are critical to the achievement of this outcome and also play a key role across a range of other outcomes.

A city's sense of safety can be measured using a number of different indicators. Of these, there are physical indicators such as the number of accidents that have taken place, and perceptual indicators, such as sense of safety in the city. This section presents some useful statistics in this area.

#### ***Road Safety***



The number of annual deaths in Hutt City is very small. Land Transport NZ is responsible for strategies to reduce the annual road toll.

The Land Transport New Zealand<sup>15</sup> figures below show that the road toll for Hutt City has reduced between 2002 and 2005.



---

<sup>15</sup> Source: Land Transport NZ:  
<http://www.landtransport.govt.nz/regions/2003/wellington/lower-hutt.pdf> and  
<http://www.landtransport.govt.nz/performance/2006/docs/safety-hutt-district.pdf>

## 2002 road trauma for Hutt City

	Deaths	6
	Serious casualties	37
	Minor casualties	212
<hr/>		
	Fatal crashes	6
	Serious injury crashes	31
	Minor-injury crashes	158
	Non-injury crashes	533
<hr/>		

## 2005 road trauma for Hutt City

	Deaths	4
	Serious casualties	31
	Minor casualties	148
<hr/>		
	Fatal crashes	4
	Serious injury crashes	24
	Minor injury crashes	116
	Non-injury crashes	470
<hr/>		

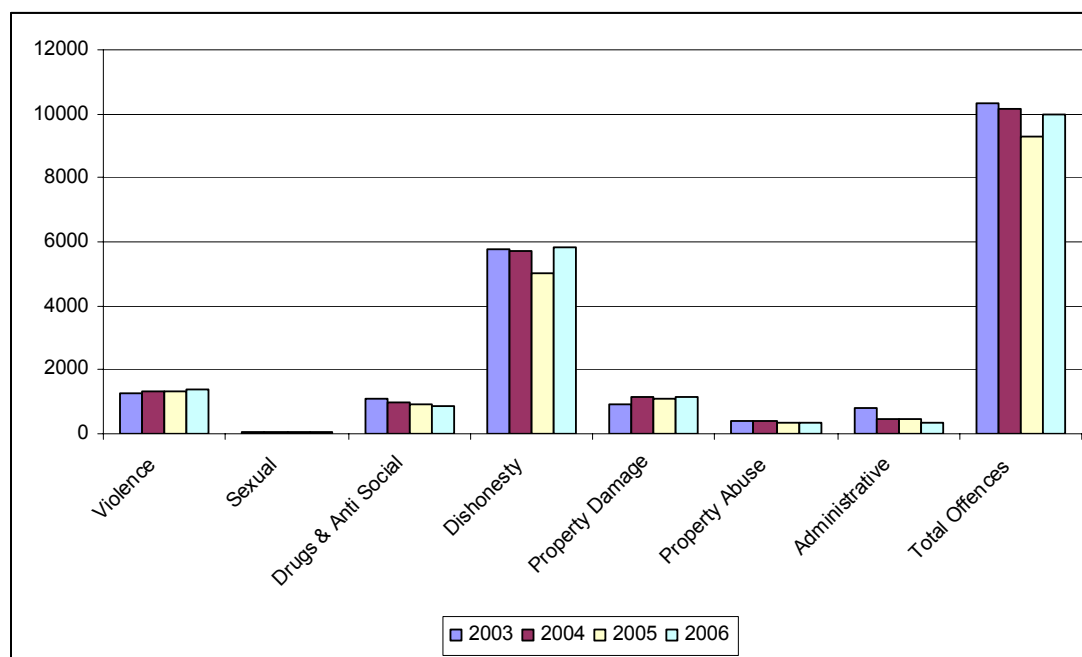
### ***Crime and Safety Statistics***

Crime statistics prevent the “evidence” for perceptions of safety in the city. The tables below show the level of various types of crime over the four year reporting period.

### Hutt City Annual Recorded Offences for 2003-2006<sup>16</sup>

Offence	2003		2004		2005		2006	
	Recorded	Resolved	Recorded	Resolved	Recorded	Resolved	Recorded	Resolved
Violence	1272	1073	1301	1121	1352	1110	1379	1137
Sexual	65	30	82	48	58	30	75	40
Drugs & Anti Social	1069	957	1003	944	940	868	881	779
Dishonesty	5763	1594	5704	1552	5035	1345	5831	1240
Property Damage	924	339	1173	434	1123	371	1130	349
Property Abuse	427	263	411	298	324	241	336	201
Administrative	785	640	482	436	454	400	353	288
Total Offences	10305	4896	10156	4833	9286	4365	9985	4034

### Number of Recorded Crimes 2003 to 2006



The graph above shows that the different types of crime have remained fairly static over the years. However, while total crime appears to have risen between 2005 and 2006, total crime still appears to be declining when compared with 2003 and 2004.

### City Safety

In 2005, the CCTV project in the central city business district was completed. Results from this initiative were very promising and the Police provided considerable support through their monitoring role. Streetsmart oversee the cameras during the daytime hours.

<sup>16</sup> Statistics New Zealand: <http://wdmzpub01.stats.govt.nz/wds/TableViewer/tableView.aspx>

In Taita and Naenae, Hutt City Council has continued to conduct safety audits and consultation with residents and businesses in these suburbs. The Ministry of Justice awarded Hutt City Council a three year contract starting from 2004/05 to manage community crime prevention activities. This has resulted in the appointment of a City Safety Officer. The Council has also responded to growing concerns over alcohol issues developing a liquor ban policy and establishing the inter-agency Liquor Advisory Group for the City. A smaller project team will focus on preventing youth access to alcohol (YATA).

## ***Injury Statistics***

### ***ACC Injury Statistics 2006 – All Entitlement Claims for Hutt City<sup>17</sup>***

	New		Ongoing	
	Number of Claims	Cost of Claims (\$000)	Number of Claims	Cost of Claims (\$000)
July 2002 – June 2003	1,480	5,955	1,035	21,722
July 2003 – June 2004	1,576	6,123	1,008	22,052
July 2004 – June 2005	1,689	7,413	973	21,896
July 2005 – June 2006	1,788	9,537	984	21,368

The table above shows the number of ACC claims has increased over the years 2002 to 2006.

## ***Personal Safety***

Personal safety is very important to Hutt City residents. In the Quality of Life 2006 survey, 97 percent of Hutt City residents stated that they feel safe in their homes during the day. However, this perception of safety falls dramatically when it comes to walking alone in the neighbourhood after dark, or in the city centre after dark.

## ***Safety in the City***

### ***According to the results of the 2006 Quality of Life Survey (TNS NZ)***

	<b>Very Safe %</b>	<b>Fairly Safe %</b>	<b>Total % who feel safe</b>
At home during the day	82	15	97
At home after dark	61	32	93
In your neighbourhood after dark	38	38	76
Walking alone in the neighbourhood after dark	28	33	61
In the city centre during the day	74	22	96
In the city centre after dark	15	46	61

## ***Safety of Children***

In the 2006 Quality of Life survey, two-thirds (67%) of Hutt City residents felt children were safe in their neighbourhood, rating them either *very safe* (23%) or *fairly safe* (44%). The remainder felt children were either *very unsafe* (8%) or *a bit unsafe* (21%) in their neighbourhood.

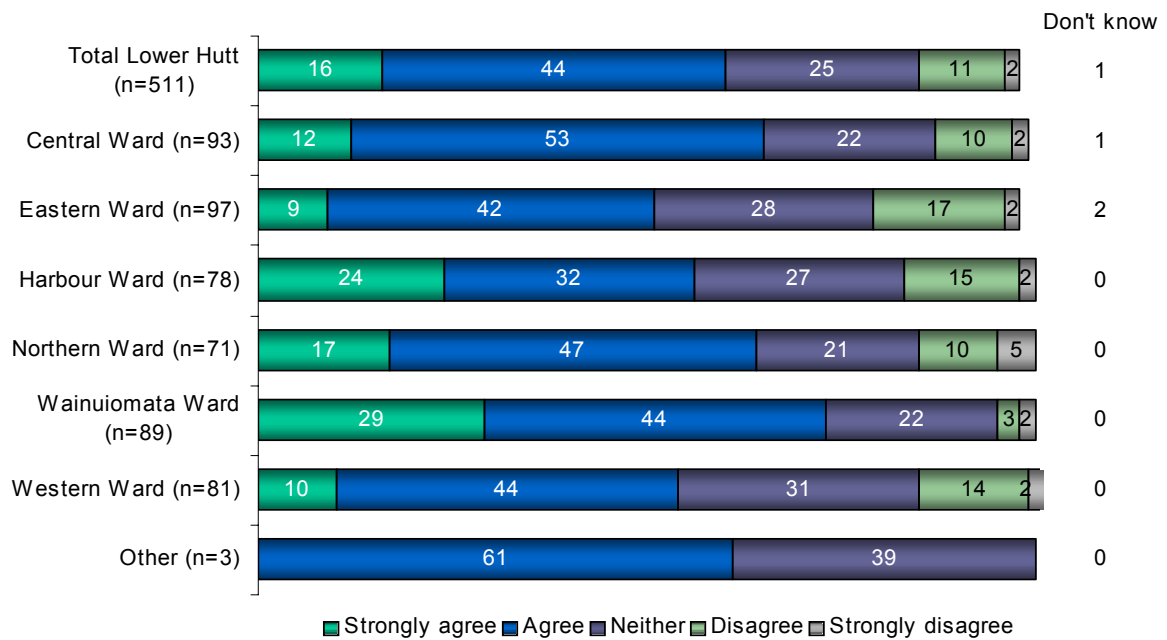
<sup>17</sup> Source: ACC. [http://www.acc.co.nz/about-acc/acc-injury-statistics-2006/SS\\_WIM2\\_062799](http://www.acc.co.nz/about-acc/acc-injury-statistics-2006/SS_WIM2_062799)

Among those who did not think children were safe, the most frequently mentioned reason for a sense of a lack of safety for children in the neighbourhood by Hutt City residents was “dangerous people” (44%). This was followed by children requiring supervision (39%) and busy traffic/lack of pedestrian crossings (28%).

### Feelings of A Sense of Community

Three-fifths (60%) of Hutt City residents agreed they felt a sense of community in the local neighbourhood, responding either *strongly agree* (16%) or *agree* (44%).

### Felt Sense of Community – By Ward (%)



Base: All respondents

### Neighbourhood Contact

Almost all (95%) Hutt City residents indicated they had had *some positive contact* (such as a nod or saying hello) with people in their neighbourhood. Nearly three-quarters (71%) had had greater positive contact (such as a visit, or asking small favours).

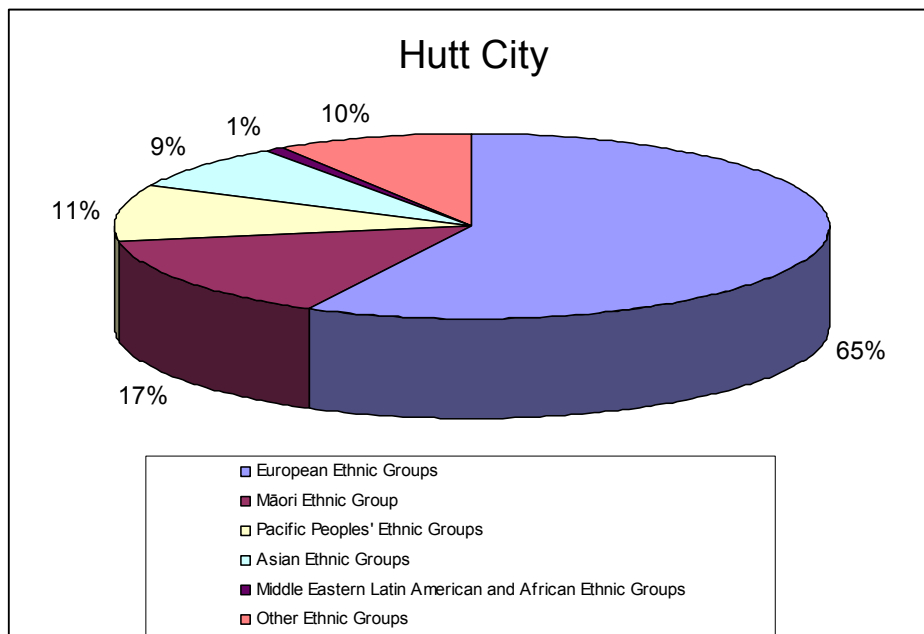
### Neighbourhood Contact – By Ward (%)

	Negative contact where there's outright tension or disagreement	Some negative contact such as not getting on with them	Some positive contact such as a nod or saying hello	Positive contact such as a visit, or asking each other for small favours
Total Lower Hutt (n=511)	11	11	95	71
Central Ward (n=93)	6	6	95	69
Eastern Ward (n=97)	8	10	100	66
Harbour Ward (n=78)	10	12	97	74
Northern Ward (n=71)	20	11	92	74
Wainuiomata Ward (n=89)	16	14	91	68
Western Ward (n=81)	6	13	94	74
Other (n=3)	0	0	100	100

*Base: All respondents*

### Cultural Diversity

The face of New Zealand is changing gradually. In Hutt City, ethnicity figures in the 2006 census show that Hutt City is made up of 65%<sup>18</sup> European ethnic groups, 17% Māori, and 11 percent Pacific Peoples. The remaining 20 are a mix of Asian and other ethnic groups. With increasing cultural diversity, Hutt City residents felt that it is important that the city appears welcoming to all.

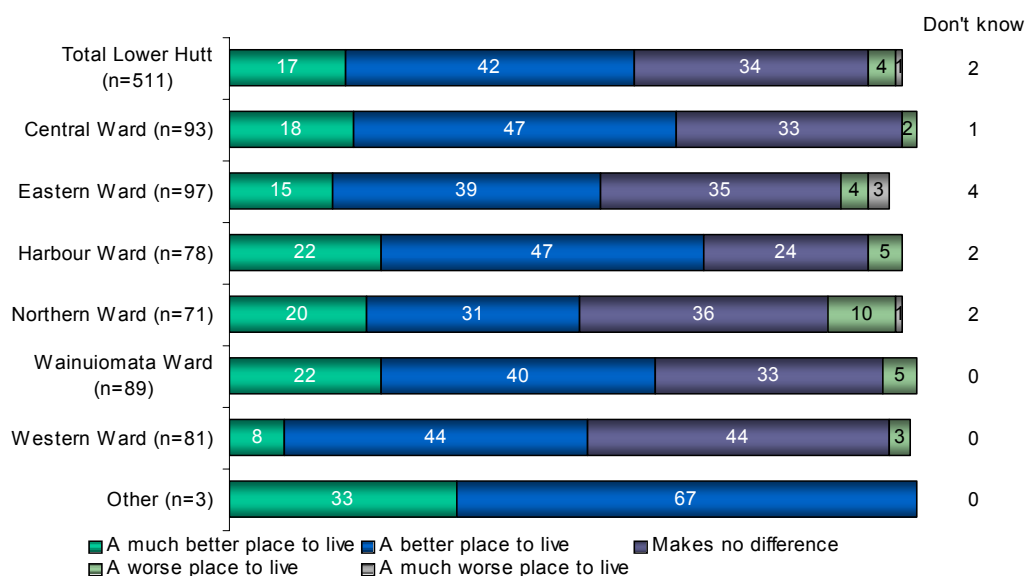


<sup>18</sup> Multiple responses allowed, i.e. residents were able to select as many ethnicities as they felt they identified with. Figures do not add up to 100 percent.

## Impact of Greater Cultural Diversity

In the Quality of Life survey 2006, the majority (59%) of Hutt City residents felt positively towards greater cultural diversity, responding either *a much better place* (17%) or *a better place* (42%).

### Perception of Impact of Greater Cultural Diversity – By Ward (%)



Base: All respondents

### Number of Residents Gaining Citizenship

2004	2005	2006
335	440	525

According to the Department of Internal Affairs<sup>19</sup>, the number of residents gaining citizenship in Hutt City has increased considerably between the years 2004 and 2006. This has added to the diversity in the city. In terms of country of birth for these new citizens, the highest percentage came from Oceania, followed very closely by Central and South Asia (19% and 18% respectively). It is worth noting that 14 percent of new citizens were born in Africa, a much more recent source of immigration than the other regions.

Region of Birth	Percent
Oceania	19
Central and South Asia	18
Africa	14
South-East Asia	14
United Kingdom and Ireland	11
North Asia	9
Europe	7
Middle East	7
North and South America	1
Total	100%

<sup>19</sup> Cited in the Quality of Life Twelve Cities Report 2006.

### **Supporting Refugees and New Migrants**

Hutt City is the fourth most popular destination selected by central government for refugee resettlement, and also attracts large numbers of new migrants. To support these new communities, Council works with the organisations that provide services to assist and facilitate the settlement process.

In 2005, Council supported the establishment of the New Settlers Centre to be centrally located at the Te Awakairangi Community Resource Centre in Laings Road. Council worked with the Department of Labour and relevant community groups to achieve this.

### **Sense of Belonging—Community Participation**

The extent of participation in the democratic process is often used as a proxy measure for the extent residents are engaged with and feel a sense of belonging in their local communities.

### **Voter Turnout--Enrolled electors who voted (%)<sup>20</sup>**

	<b>2001</b>	<b>2004</b>
Hutt City	46.0	39.0
Kapiti Coast District	63.0	51.0
Porirua City	43.0	43.0
Upper Hutt City	58.0	45.0
Wellington City	48.0	42.0

### **The Mayoralty<sup>21</sup>**

***This table describes key features of the mayoral election for Hutt City Council at the last two local elections.***

	<b>2001</b>	<b>2004</b>
Number of mayoral candidates	2	4
Sitting mayor	Re-elected	Defeated
Gender of the elected mayor	Male	Male
Voter turnout for the election	46%	39%

<sup>20</sup> Source: Ministry of Social Development, Social Report  
<http://socialreport.msd.govt.nz/regional/t-authorities/voter-turnout.html>

<sup>21</sup> Source: Department of Internal Affairs Local Authority Elections Statistics  
[http://www.localcouncils.govt.nz/lqip.nsf/wpg\\_URL/Councils-A-Z-Councils-Hutt-City-Council-E1](http://www.localcouncils.govt.nz/lqip.nsf/wpg_URL/Councils-A-Z-Councils-Hutt-City-Council-E1)

### ***The Council***

***This table describes the key features of the election of councillors for Hutt City Council at the last two local elections.***

	<b>2001</b>	<b>2004</b>
Number of council positions	11	11
Average number of electors per council position	5916	6077
Number of candidates in the election	27	28
Percentage of council members re-elected	82%	64%
Gender of elected councillors	Male 55% Female 45%	Male 55% Female 45%
Number of enrolled electors	65071	66850
Number of actual voters	29772	26018
Percentage of turnout for the election	46%	39%

***Voter turnout has declined between 2001 and 2004 elections, although the elections were more hotly contested in 2004.***

### **Outcome Four: Everyone Has Affordable Access To Excellent Educational Services**

Council's objective is to achieve an increase in the knowledge capacity of the community through advocating for the local community, providing for the education needs of our communities including providing a supportive environment for education providers, increasing the ability for residents to access knowledge electronically, and supporting employment and training initiatives that offer improved employment, skill and income opportunities. Council has worked with the Ministry of Education and education providers including WelTec and the Open Polytechnic, enhanced its library services and targeted the needs of young people through programmes with Work and Income New Zealand and the Ministry of Social Development.

Educational opportunities are high on the list of priorities for Hutt City residents. The tables below present the participation rates in various levels of education in Hutt City.

#### **Highest Qualification Level Attained—2006 Census**

	No Qualification	Level 1 Certificate Gained at School	Level 2 Certificate Gained at School	Level 3 or 4 Certificate Gained at School	Overseas Secondary School Qualification	Level 1, 2 or 3 Certificate Gained Post-school	Level 4 Certificate Gained Post-school	Level 5 Diploma	Level 6 Diploma	Bachelor Degree and Level 7 Qualifications	Higher Degree	Not Elsewhere Included
<b>Lower Hutt City</b>	22.7%	12.6%	9.1%	5.1%	5.0%	4.8%	9.3%	3.6%	4.7%	10.2%	4.6%	8.5%
Kapiti Coast District	22.2%	12.9%	8.9%	3.7%	5.3%	4.5%	10.5%	3.7%	6.3%	8.7%	4.1%	9.2%
Porirua City	22.8%	12.4%	9.3%	4.9%	4.5%	4.9%	8.0%	3.5%	5.0%	9.1%	3.8%	12.0%
Upper Hutt	23.1%	13.8%	10.0%	4.6%	4.6%	4.7%	10.8%	3.9%	4.7%	7.8%	3.3%	8.8%
Wellington City	10.5%	7.6%	8.2%	9.5%	5.7%	3.5%	6.4%	3.7%	5.1%	21.5%	11.3%	6.9%
<b>New Zealand</b>	22.4%	12.2%	8.3%	5.4%	5.5%	4.1%	9.1%	3.5%	5.0%	10.0%	4.2%	10.4%

**Percentage of school leavers qualified to attend university, by Territorial Local Authority (2006)<sup>22</sup>**

Territorial Local Authority	Total	Gender		Ethnic Group				
		Female	Male	Māori	Pasifika	Asian	Other	NZ European
Lower Hutt City	33.6	44.0	21.9	9.9	14.0	63.0	23.3	43.7
Kapiti Coast District	31.3	39.0	24.1	15.4	x	80.0	x	35.0
Porirua City	11.1	11.7	10.5	7.6	11.7	x	x	16.5
Upper Hutt City	33.1	26.7	36.4	11.6	x	52.9	x	38.0
Wellington City	51.2	56.0	46.3	22.2	22.3	66.3	26.1	58.8
<b>New Zealand Total</b>	<b>36.3</b>	<b>41.1</b>	<b>31.4</b>	<b>14.8</b>	<b>16.8</b>	<b>63.0</b>	<b>40.7</b>	<b>41.3</b>

Note: x = for this category there were less than 5 school leavers qualified to attend university.

Hutt City compares favourably with all of its neighbours, with the exception of Wellington City. Generally speaking, Hutt City females are more than twice as likely to leave school with a qualification enabling university attendance than their male counterparts. This gender difference is least pronounced in Porirua, and even the reverse in Upper Hutt. Ethnic differences are also evident, with Asian students considerably more likely than other ethnicities to achieve university entrance qualifications upon leaving school.

**Percentage of school leavers with little or no formal attainment, by Territorial Local Authority (2006)<sup>23</sup>**

Territorial Local Authority	Total	Gender		Ethnic Group				
		Female	Male	Māori	Pasifika	Asian	Other	NZ European
Kapiti Coast District	13.9	11.7	15.9	26.2	x	x	x	11.0
Porirua City	28.2	24.8	31.5	35.8	20.6	x	x	32.3
Upper Hutt City	10.1	10.2	10.0	18.2	x	x	x	7.8
Lower Hutt City	10.8	10.8	10.7	20.1	9.0	x	x	8.9
Wellington City	4.8	4.7	4.9	12.3	3.3	3.3	13.5	3.3
<b>New Zealand Total</b>	<b>11.1</b>	<b>10.4</b>	<b>11.9</b>	<b>21.8</b>	<b>12.2</b>	<b>4.5</b>	<b>9.0</b>	<b>8.8</b>

Note: x = for this category there were less than 5 school leavers with little or no formal attainment.

<sup>22</sup> Source: Ministry of Education  
<http://educationcounts.edcentre.govt.nz/datacube/edachievmnt/simu6.html>

<sup>23</sup> Ministry of Education: Education Counts:  
<http://educationcounts.edcentre.govt.nz/datacube/edachievmnt/dsau3.html>

**Percentage of Early Childhood Education Attendance By Provider (2006)<sup>24</sup>**

	Kindergarten, Playcentre, Education and Care Service or Home-based	Kohanga Reo	Playgroup of Pacific Educational Centre	Attended ECE but type unknown	Did not Attend
Hutt City	85.2	6.7	2.5	1.5	4.0
Total New Zealand	85.1	5.5	2.5	1.4	5.5

**Percentage of Non-Attendance At Early Childhood Education by Ethnicity (2006)**

	Hutt City	New Zealand
NZ European	1.6%	2.0%
Māori	6.5%	1.1%
Pacific Peoples	10.4%	15.8%
Asian	2.6%	4.0%
Other	6.7%	8.6%
Total	4.0%	5.5%

Source: Ministry of Education (cited in Quality of Life 2007 Report)

<sup>24</sup> Source: Ministry of Education (cited in Quality of Life 2007 Report)

### **Outcome Five: Everyone Has A Quality Standard Of Affordable Housing**

Council’s objective is to achieve a range of housing and provider options within Hutt City and a high quality of new and renovated housing. Council provides social housing, encourages other agencies to provide housing options, and has worked closely with Housing New Zealand Corporation, the Hutt Mana Energy Trust and EnergySmart on housing initiatives including refits.

Hutt City continues to grow, and with this growth comes a demand for more housing. However, as with the rest of New Zealand, the cost of housing continues to rise, making home affordability a key area of concern for residents, particularly first home buyers.

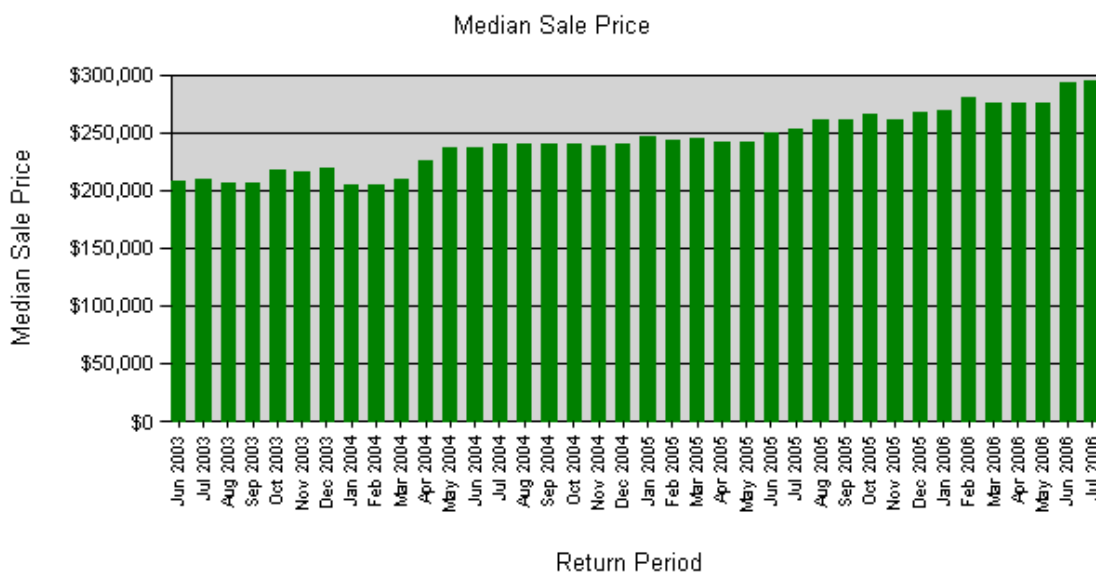
The table below shows the change in the number of occupied dwellings over the past ten years.

#### **Number of Occupied Dwellings For the Last Three Censuses**

	<b>2006</b>	<b>2001</b>	<b>1996</b>	<b>2006-2001 change</b>	<b>2006-2001 % Change</b>	<b>1996-2001 Change</b>	<b>1996-2001% Change</b>
<b>Hutt City</b>	35,649	34,659	34,140	990	2.9%	519	1.5%

#### **Median Sale Prices**

The Real Estate Institute of New Zealand produces figures on the median sale price. The graph below shows a steady rise in the median sale price in Hutt City from 2003 to 2006. Median sale prices increased from \$208,000 in June 2003 to \$295,000 in July 2006.



**The main provider of affordable rental housing in Hutt City is Housing New Zealand Corporation.**

### **Average Weekly Rent (Mean)**

	2006	2001	1996	Dollar Increase 2001-2006	Percent Increase 2001-2006	Dollar Increase 1996-2001	Percent Increase 1996-2001
<b>Lower Hutt City</b>	<b>\$190</b>	<b>\$160</b>	<b>\$161</b>	\$30	18.8%	-\$1	-0.60%

According to Statistics New Zealand, the mean rent for properties in Hutt City increased by \$30 in the five year period since the last census. However, as would be expected, mean rents vary significantly between suburbs, with the most expensive being \$310 in Tirohanga, and the least expensive being \$134 in Taita North.

### **Housing Affordability Index—Wellington Region**

AMP commissions Massey University Real Estate Analysis Unit (MUREAU) to calculate The Home Affordability index by comparing the average weekly earnings with the Median Dwelling Price and the mortgage interest rate. The earnings figure represents the money available to the family, or household unit, and the Median Dwelling Price combined with the mortgage interest rates provide an indicator of the expense involved.

### **Regional Affordability March 2006 Quarter<sup>25</sup>**

Region	Home Affordability Index		Percent Change in Home Affordability in the last 12 months
	November 2005	February 2006	
Northland	26.35%	27.92%	21.2%
Auckland	35.37%	35.2%	10.1%
Waikato/Bay of Plenty/Gisborne	28.84%	29.56%	18.4%
Hawke's Bay	26.90%	25.78%	3.9%
Taranaki	20.10%	24.13%	28.5%
Manawatu/Wanganui	19.87%	20.10%	20.5%
<b>Wellington</b>	<b>26.78%</b>	<b>26.14%</b>	<b>13.6%</b>
Nelson/Marlborough	28.36%	31.34%	9.9%
Canterbury/Westland	27.72%	27.19%	15.7%
Otago	22.83%	21.94%	12.8%
Central Otago Lakes	42.33%	47.02%	10.5%
Southland	13.46%	13.19%	3.9%
New Zealand	28.80%	28.42%	11.1%

All 12 regions recorded a 12-monthly decline in home affordability. Taranaki dominates in top regional ranking at 28.5%, followed by Northland (21.2%), Manawatu/Wanganui (20.5%), Waikato/Bay of Plenty/Gisborne (18.4%), Canterbury/Westland (15.7%), Wellington (13.6%), Otago (12.8%), Central Otago Lakes (10.5%), Auckland (10.1%), Nelson/Marlborough (9.9%), and Southland and Hawke's Bay (3.9%).

<sup>25</sup> Source: AMP Home Affordability Report, March 2006, <http://www.amp.co.nz/upload/Home%20Affordability%20report%20-%20March%202006.pdf>

### ***Household Sector of Landlord for Rented Privately Occupied Dwellings***

<b>Landlord</b>	<b>Lower Hutt City</b>	
	<b>Number</b>	<b>Percent</b>
Private Person, Trust or Business	6429	64.9%
Local Authority or City Council	180	1.8%
Housing New Zealand Corporation	2826	28.5%
Other State-Owned Corporation or State-Owned Enterprise or Government Department or Ministry	63	0.6%
Not Elsewhere Included	414	4.2%
Total rented dwellings	9906	

The above table from the 2006 Census shows that private landlords own the majority of the rental housing stock in Hutt City. However, Housing New Zealand Corporation owns just under 30 percent of rental properties in Hutt City, which guarantees income related rents for the most needy of Hutt City's residents.

### ***Housing For The Elderly and Socially Disadvantaged***

Hutt City Council provides housing for the elderly and socially disadvantaged. Occupation rates for these properties remain high and these homes are keenly sought by those who qualify. Council owns 186<sup>26</sup> housing units, valued at \$16.2 million. Council housing is affordable with rents starting at as low as \$110.00 per week and can go up to \$170 depending on type of unit and location. Grounds are generally maintained by Council though tenants can have their own flower or vegetable gardens.

### ***Waiting lists for Housing New Zealand<sup>27</sup>***

While Housing New Zealand Corporation is the biggest provider of affordable housing in Hutt City, there is often a waiting list before housing can be allocated. This waiting list operates using a prioritisation process.

Housing priority is worked out through an assessment process that considers a range of factors including: the condition of and facilities available in their current dwelling; the ability of their current dwelling to meet their social, medical and personal needs; and their ability to gain access to a suitable home because of a lack of skills, discrimination or financial means. Please note that as at 31 August 2004 and again at 31 August 2005, the boundaries for these neighbourhood units changed, therefore figures for the neighbourhood units are not individually comparable with earlier data.

---

<sup>26</sup> This total does not match the Census total of 180 homes owned by Councils due to Census rounding protocols. The 186 figure is supplied by Hutt City Council.

<sup>27</sup> Housing New Zealand: <http://www.hnzc.co.nz/hnzc/web/rent-buy-or-own/rent-from-housing-new-zealand/waiting-list-by-nu.htm#Wellington>

***The Hutt City waiting list as at 31 July 2007 totalled 286 applicants and consisted of:***

- Ten (10) applicants with a severe and persistent housing need (A priority);
- One hundred and twenty seven (127) applicants with a significant and persistent housing need (B priority)
- One hundred and three (103) applicants with a moderate housing need (C priority)
- Forty six (46) applicants with a low level housing need (D priority)

## ***Outcome Six: A Local Economy That Is Attractive To Both Business And Residents***

Council's objective is for more businesses to be operating in Hutt City and to achieve recognition of Hutt City as a business location and vibrant city. Council has worked closely with Positively Wellington Business and with businesses and business groups to promote retention, growth and attraction of business to the city, and continued investment in current and new business activities. The availability of a skilled workforce is a key component, and Council has worked in partnership with education providers, Work and Income New Zealand, the Ministry of Social Development and Upper Hutt City Council to advance this goal. Council has also worked hard to improve communication between Council and the local business community and build the profile of Hutt City as a place to do business, visit and live.

In recent years Hutt City Council has placed great emphasis on the city's economic development. There has been major business development in Hutt city over the years since 2003, with probably the biggest being the expansion of Westfield Mall. In 2006, the visible signs of this development include the opening of the Sky City Cinemas at the top of the Westfield complex, the Harvey Norman building by the Melling Bridge and the Les Mills gymnasium in the old Nees Mitre Ten building.

The tables in this section present a selection of measures of economic activity in the City.

**Detailed Industry In Hutt City for Each ANZSIC Code 2003-2006**<sup>28</sup>

	2003			2004			2005			2006		
	Enterprises	Geographic Units	Employee Count	Enterprises	Geographic Units	Employee Count	Enterprises	Geographic Units	Employee Count	Enterprises	Geographic Units	Employee Count
Total Industry	7207	7544	39280	7516	7859	39950	7665	8004	42030	7863	8209	43230
A Agriculture, Forestry and Fishing	38	38	25	45	45	25	42	42	30	39	39	35
B Mining	4	7	35	8	11	35	8	11	35	11	12	30
C Manufacturing	576	569	6600	592	595	6540	585	576	6730	582	566	6880
D Electricity, Gas and Water Supply	9	13	230	6	10	110	6	8	160	6	8	270
E Construction	1044	1053	3190	1089	1098	3270	1154	1160	3730	1190	1194	3880
F Wholesale Trade	537	602	3020	555	616	3170	553	612	3370	550	614	3540
G Retail Trade	888	946	4930	915	974	4830	932	1002	5230	975	1058	5560
H Accommodation, Cafes and Restaurants	166	178	1320	174	186	1440	185	194	1470	193	202	1630
I Transport and Storage	342	352	1490	351	367	1540	357	374	1650	371	389	1710
J Communication Services	85	92	1530	91	97	1630	90	98	1510	85	92	1620
K Finance and Insurance	210	219	550	184	193	580	202	214	590	206	215	650
L Property and Business Services	2266	2308	5930	2414	2452	5880	2458	2495	6390	2545	2582	6300

<sup>28</sup> Statistics New Zealand: <http://wdmzpub01.stats.govt.nz/wds/TableViewer/tableView.aspx>

M Government Administration and Defence	16	30	1170	17	28	1090	15	27	1300	15	26	1260
N Education	148	190	3370	154	194	3400	145	190	3030	154	201	2990
O Health and Community Services	312	340	3860	330	360	4140	335	358	4330	323	349	4470
P Cultural and Recreational Services	220	240	820	230	250	980	231	250	1160	240	259	1090
Q Personal and Other Services	346	367	1220	361	383	1270	367	393	1310	378	403	1310

The table above shows that the number of businesses in Hutt City has increased significantly between the period 2003 and 2006. This was accompanied by an increase in the employee count by a total of 3950 employees in the same period. The largest increases took place in the construction sector and in the retail trade sector. This finding is to be expected with the expansion of Westfield Mall in Queensgate. The largest job losses were in the Education sector, which lost 380 jobs in the period between 2003 and 2006.

**Changes In Hutt City's Number of Businesses and Employees Between 2003 and 2006**

	Percent Change 2003-2006		
	Enterprises	Geographic Units	Employee Count
Total Industry	656	665	3950
A Agriculture, Forestry and Fishing	1	1	10
B Mining	7	5	-5
C Manufacturing	6	-3	280
D Electricity, Gas and Water Supply	-3	-5	40
E Construction	146	141	690
F Wholesale Trade	13	12	520
G Retail Trade	87	112	630
H Accommodation, Cafes and Restaurants	27	24	310
I Transport and Storage	29	37	220
J Communication Services	0	0	90
K Finance and Insurance	-4	-4	100
L Property and Business Services	279	274	370
M Government Administration and Defence	-1	-4	90
N Education	6	11	-380
O Health and Community Services	11	9	610
P Cultural and Recreational Services	20	19	270
Q Personal and Other Services	32	36	90

The above table shows that there has been an overall increase in the number of businesses in Hutt City, and a consistent increase in the number of employees across the majority of ANZSIC codes. The only exceptions are a reduction of 380 jobs in the education sector (although the number of enterprises has increased), and a loss of five employees in the mining sector.

**Employment**

Unemployment has seen a sharp decline in the past few years in Hutt City and throughout New Zealand. Skilled labour shortages are often cited to be one of the primary barriers for businesses to grow. The table below illustrates the drop in the unemployment figures between 2002 and 2006.

**Number Of Registered Unemployed In Hutt City Aged 18-64<sup>29</sup>**

	June 2002	June 2006
Hutt City	3,227	1,092

<sup>29</sup> Source: Ministry of Social Development: <http://www.msd.govt.nz/media-information/benefit-factsheets/sc-benefit-factsheets.html>

## Youth Employment

With a view to increasing the opportunities for youth, The Hutt Valley Youth Transition Service was launched in early 2006. This is a venture between Hutt City and Upper Hutt City, contracted to the Ministry of Social Development. The aim of this service is that by 2008, all 15-19 year olds in the Hutt Valley will be in work, education, or training, or other options that lead to long-term economic independence and wellbeing.

## Commuting Pattern Of The Working Population In 2006<sup>30</sup>

Area	Work and live in same Territorial Authority	Work and live in different Territorial Authorities
Lower Hutt City	59.7%	40.3%
Kapiti Coast District	62.1%	37.9%
Porirua City	44.7%	55.3%
Upper Hutt City	45.3%	54.7%
Wellington City	88.2%	11.8%
Wellington Region	98.1%	1.9%

The table above shows that Hutt City provides employment to approximately 60% of its residents, a higher level than for Porirua and Upper Hutt cities, but well below Wellington City's rates.

## Regional Economic Indicators<sup>31</sup>

Indicator	Date	Wellington Region		New Zealand	
		Latest*	Trend^	Latest*	Trend^
Employment <sup>1</sup>	March 2006	-2%	1%	3%	3%
Nominal retail sales <sup>1, 2</sup>	March 2006	7%	5%	5%	6%
Car sales <sup>3</sup>	June 2006	-12%	-4%	-15%	-3%
Number of new dwelling consents <sup>1</sup>	May 2006	-24%	-8%	-7%	-11%
House sales <sup>4</sup>	May 2006	14%	6%	-4%	-4%
House prices <sup>5</sup>	June 2006	13%	13%	12%	14%
Value non-residential consents <sup>1</sup>	May 2006	-26%	-2%	-3%	1%
Guest nights purchased <sup>1</sup>	May 2006	4%	6%	-1%	0%
Unemployment rate <sup>1</sup>	March 2006	4.0%		3.7%	
Workforce participation rate <sup>1</sup>	March 2006	71%		69%	

<sup>30</sup> Source: Census 2006, Statistics New Zealand (retrieved from Department of Labour Annual In-depth Regional Labour Market Report (AIDR)—Wellington Region [http://www.dol.govt.nz/publications/lmr/regional/indepth/wellington/aidr-wellington\\_04.asp](http://www.dol.govt.nz/publications/lmr/regional/indepth/wellington/aidr-wellington_04.asp))

<sup>31</sup> Source: Source: Positively Wellington Business Regional Outlook Update August 2006. [http://www.positivelywellingtonbusiness.co.nz/assets/Tobin/PWB%20Update%20Aug\\_06%20P3.pdf](http://www.positivelywellingtonbusiness.co.nz/assets/Tobin/PWB%20Update%20Aug_06%20P3.pdf). This report cites its sources and notes as <sup>1</sup>Statistics New Zealand, <sup>2</sup> excludes auto sales and servicing, <sup>3</sup>Land Transport NZ, <sup>4</sup>Real Estate Institute of NZ, <sup>5</sup>Quotable Value NZ, and <sup>6</sup>Level.

*\* Latest is the percentage change comparing the past three months' data with the same three months a year earlier*

*^ Trend is the percentage change comparing the past 12 months' data with the same 12 months a year earlier.*

The table above shows that the Wellington region is roughly comparable with the rest of New Zealand in the indicators included. The biggest difference is in the number of new dwelling consents and the value of non-residential consents where the Wellington region's figures show a much bigger decline over previous periods than the rest of New Zealand.

## ***Outcome Seven: Affordable Access To Community Facilities That Includes Arts, Cultural And Recreational Options***

Council's objective is to achieve increased awareness of and participation in arts, cultural and recreational activities in the city, through providing a range of facilities throughout the city and encouraging other organisations in the community in their artistic, cultural and recreational endeavours.

The City is blessed with numerous leisure and recreational opportunities, both natural and built. Hutt City is home to a number of regional parks, scenic routes bordering the sea or the hills, beaches, the Hutt River, various indoor and outdoor swimming pools, two museums and a host of artistic and cultural organisations that contribute to the fabric of the city.

### ***Leisure and Recreation***

Recreation facilities play an important role in keeping populations healthy, both physically and mentally.

Hutt City has six swimming pools, three of which are outdoor pools and three indoor pools. The annual resident satisfaction survey (Communitrak™) measures pool usage as well among households responding to the survey.

### ***Swimming Pool Usage and Satisfaction***

	<b>2003</b>	<b>2004</b>	<b>2005</b>	<b>2006</b>
Usage	65%	66%	70%	68%
Satisfaction	74%	74%	76%	76%

According to the annual Communitrak™ Survey, just under 70% of Hutt City residents have used the swimming pools in the years between 2003 and 2006, with minor annual fluctuations.

### ***Sportsgrounds Usage and Satisfaction***

	<b>2003</b>	<b>2004</b>	<b>2005</b>	<b>2006</b>
Usage	69%	66%	72%	73%
Satisfaction	80%	79%	80%	81%

According to the annual Communitrak™ Survey, approximately 70% of Hutt City residents have used the Hutt City sportsgrounds in the years between 2003 and 2006, with minor annual fluctuations.

### ***Parks, Reserves or Garden Usage and Satisfaction***

	<b>2003</b>	<b>2004</b>	<b>2005</b>	<b>2006</b>
Usage	91%	88%	89%	91%
Satisfaction	93%	96%	97%	98%

As would be expected, a very high proportion of Hutt city residents reported using parks, reserves or gardens in the city at least once in the past year in the annual

Communitrak™ Survey. This high level of usage is matched by even higher satisfaction levels.

Furthermore, the ratio of open spaces to number of residents currently sits at 53 hectares per 1000 residents<sup>32</sup>.

### **Recreation Programmes Usage and Satisfaction**

	<b>2003</b>	<b>2004</b>	<b>2005</b>	<b>2006</b>
Usage	27%	30%	28%	28%
Satisfaction	67%	64%	64%	63%

While usage of recreation programmes is somewhat low, a number of programmes are available and are seen to be satisfactory by more than two thirds of Hutt City residents.

### **Arts and Culture**

There are at least seven art galleries in Hutt City featuring a wide range of arts and crafts by local and national artists and craftspersons. In addition to art galleries, Hutt City is home to the newly redeveloped TheNewDowse, completely revamped in 2006, to feature 11 exhibition spaces.

### **Museum Usage and Satisfaction**

		<b>2003</b>	<b>2004</b>	<b>2005</b>	<b>2006</b>
<b>Dowse Museum</b>	Usage	53%	56%	53%	46%
	Satisfaction	68%	69%	67%	59%
<b>Petone Settlers</b>	Usage	31%	32%	33%	33%
	Satisfaction	52%	55%	57%	59%

Museum patronage in Hutt City has been dampened in 2006, mostly due to the closure of the Dowse Museum for renovations. It is anticipated that museum patronage will increase considerably following re-opening of The NewDowse in 2007.

### **Library Usage**

Hutt City residents enjoy access to one central library and seven local libraries. The annual Communitrak™ survey asks residents whether they have used a city public library over the past year.

The results show that approximately 80 percent of residents have used a city library over the past year (this percentage fluctuates slightly every year).

	<b>2003</b>	<b>2004</b>	<b>2005</b>	<b>2006</b>
Usage	84%	78%	86%	81%
Satisfaction	88%	85%	89%	88%

<sup>32</sup> HCC Reserves Strategic Direction Report, 2003. Hutt City Council

**Outcome Eight: A Diverse Natural Environment That Is Accessible, Enjoyable And Safe**

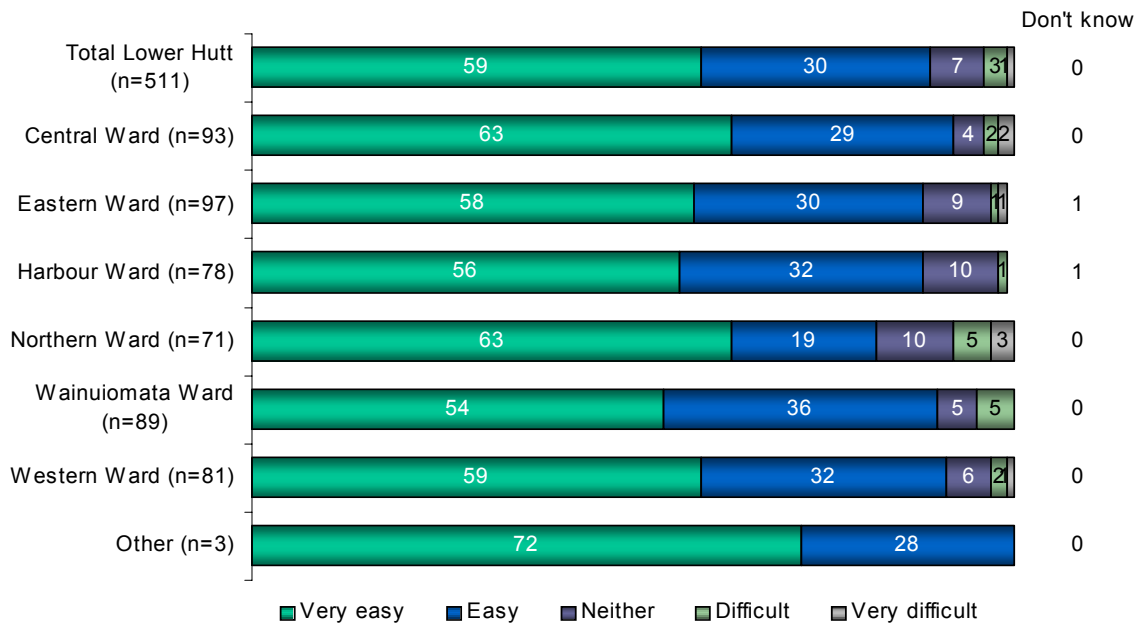
Council’s objective is to achieve diversity and sustainability of the natural environment through policies and practices that enhance the environmental sustainability and natural diversity of our parks and reserves, and preserve the essential elements of the city’s landscape that give structure and contribute to its natural and cultural identity. Council also aims to provide improved access to a safe and enjoyable natural environment.

Hutt City has a varied natural environment, and accessibility to this environment is a key means to its enjoyment.

**Residents’ Rating Of Ease Of Access To Their Local Park Or Other Green Space (2006)**

In the Quality of Life Survey 2006, almost all (89%) Hutt City residents believed it was easy to access a local park or other green space, responding either *very easy* (59%) or *easy* (30%).

**Ease of Access to Local Park or Other Green Space – By Ward (%)**



*Base: All respondents*

The Quality of Life report also includes a discussion of biodiversity, defined as the number and variety of organisms found within a specified geographic region and the variability among living organisms on the earth. The Quality of Life report included three measures for the biodiversity indicator. These are:

- City position in conservation and sustainable management of biodiversity
- Hectares of privately owned open space covered by QEII Trust registered covenants
- Number of ecological heritage sites.

Hutt City has addressed biodiversity in its Long Term Council Community Plan. The District Plan also includes an inventory of ecological sites including areas of native vegetation.

The QEII Trust is a non-government organisation that enables landowners to protect special natural and cultural features on their land through open space covenants that are legally binding protection registered on the title of the land for perpetuity.

#### ***QEII Trust Covenants By Land Area and Number by Region (October 2006)***

	Total land in the region (hectares)	Number of registered covenants	Number of approved covenants	Total registered and approved hectares	Largest registered covenant in region (hectares)	Average covenant size (hectares)
Wellington	813,000	217	52	5,770	824	21.4
Total NZ	26,303,400	2,412	616	98,217	6,564 <sup>33</sup>	36.1

#### ***Number of Ecological Heritage Sites (2007)***

Hutt City has 63 significant natural resource areas.

#### ***Hutt City Council's Environmental Activities***

The following section from Hutt City Council's 2006 Annual Report presents a more detailed discussion of Hutt City's activities in achieving this outcome.

#### ***Biodiversity***

The city boundaries now include three unfenced mainland island projects and one island sanctuary. Volunteer pest trapping has enabled the reintroduction of North Island Brown Kiwi at Rimutaka Forest Park. Hutt City is fortunate to have natural occurrences of kaka and NZ falcon. The improving condition of the parks is evident in the use of street edge trees. This past year a falcon took to roosting in one at Waiwhetu and a bellbird nested successfully in another at Eastbourne. Recommencing bird monitoring from Stokes Valley to Gracefield would be useful to gauge whitehead and bellbird presence compared to 1980s data.

The stunning biodiversity that quietly exists within the Hutt Valley was illustrated by a land snail survey at Waiwhetu in 2006.

<sup>33</sup> The Bay of Plenty has the largest registered covenant in New Zealand. Data Source: QEII Trust, cited in the 2007 Quality of Life Report.

Surprisingly, the number of native species that were discovered in distinct communities in an urban park was similar to the number of species found in undisturbed north west Nelson forest (highest recorded in South Island).

### ***Biodiversity Planting***

Re-vegetation species are selected and eco-sourced to suit a range of sites and environments throughout the city. Emphasis is placed on choosing pioneer species to facilitate establishment. Plants are used in re-vegetation of slip sites and community re-vegetation projects.

### ***Coastal Restoration***

Coastal projects continue to increase in number and popularity. The beach by HW Shortt Park has been transformed by weed removal and planting with spinifex, pingao and native shrubs and coastal herbs. Weed removal has led to species such as coastal celery establishing by themselves. Volunteer groups report that the visible improvements to the beach have resulted in several walkers starting to pick up rubbish on a regular basis.

Days Bay residents helped with experimental erosion control planting, and are keen to continue despite initial setbacks. Friends of Petone Beach started work in two project areas, one using only spinifex to build dunes from flat sand, and the other replacing marram dune with pingao.

### ***Wetlands***

Wetlands are a rare ecosystem type. Most of the wetlands in the region have been lost, with only between 7% - 14% remaining. In 2006, Council surveyed a wetland in Parkway, Wainuiomata. It was found to have high representative value and will be retained in Council ownership. It is a diverse ecosystem and has some unusual features, for example, *Olearia virgata* which is not common in wetlands in the Wellington region. It features some intact ecotones from dry kamahi forest through occasionally flooded kahikatea to carex sedgeland. This natural wetland will provide inspiration for the ecological zone being planned for Hugh Sinclair Park.

### ***Pest Plant and Boundary Weed Control Programme***

As part of its pest plant and boundary weed programme Hutt City Council has a number of strategies and projects operating.

### ***Education:***

Prevention is better than cure. The publication "Plant Me Instead", developed with the Department of Conservation, Greater Wellington Regional Council and Wellington City Council, has been distributed to Council libraries and service centres, local garden centres, landscape contractors, secondary schools and is soon to go out to primary schools as a resource tool.

### ***Volunteer Programmes:***

Volunteers, through programmes such as Weed busters, undertake weed control on beaches and Key Native Ecosystem sites such as Galbraiths Gully and Haywards Reserve.

### ***Monitoring and Early intervention:***

Council monitors potential new threats and shares early intervention control work with Greater Wellington Regional Council for species such as Bomarea, Mile-a-minute and Madeira Vine.

### ***Control programmes including site led and individual species:***

Site led work includes beaches and coastal zones, Key Native Ecosystems, and boundary weed control (BWC) along high profile reserves (such as those along main arterial routes, and near playgrounds, sports parks and entrances to suburbs) where there is a good background of native bush bordered by a band of weeds such as gorse, blackberry and broom. Clearing the weeds provides an immediate landscape enhancement without the need for extensive re-vegetation planting.

### ***Pest Animal Control***

Council continued to work with Greater Wellington Regional Council on possum control programmes with 50:50 funding of the Parkway bush area in Wainuiomata. This complemented the control programme in the new East Harbour Regional Park, the Wainuiomata Catchment area and the TB possum control programme in the Wainuiomata Coast Road area.

The Possumbuster trap loan scheme continued to operate with some 350 traps out on loan to residents. Volunteer trappers operate in Stokes Valley, Eastern Hills, Jubilee Park and Galbraiths Gully. Council has increased the number of rat poison stations on the Petone Foreshore in an attempt to eradicate the rats.

### ***Issues Relating to the natural environment***

The 2007 Quality of Life Report includes an assessment of the key environmental issues facing each city. For Hutt City, these issues are:

- Flooding concerns from Hutt River, and Awamutu and Waiwhetu Streams.
- Waiwhetu Stream is heavily contaminated by pollutants and requires considerable remediation.
- The growing population is putting pressure on the water supply.

### ***Waste Management and Recycling***

Effective waste management and recycling play a key role in the preservation of a diverse natural environment that is safe and enjoyable. In 2007, Hutt City recycled 63.1 kilograms of recyclable material per resident. However, Hutt City could exert a lot more effort in this area, as compared with North Shore and Rodney cities that recycled 114.7 and 104.4 kilograms per resident respectively<sup>34</sup>. Similarly, Hutt City sent approximately 200 kilograms of solid waste to landfills per resident per year in the period 2003 to 2006.

---

<sup>34</sup> Individual councils cited in the 207 Quality of Life Report.

**Outcome Nine: A Healthy Balance Between Natural And Built Environments**

**And**

**Outcome Ten: A Built Environment That Is Attractive, Safe And Healthy**

Council’s objective is to achieve an appropriate balance between the natural and built environment through ensuring the amount and quality of green spaces in the city is maintained, implementing planning processes that address the balance between the natural and built environment, balancing environmental enhancement and urban flood protection, and promoting the protection of the natural environment. Council also aims to achieve a built environment considered to be attractive, healthy and safe.

These two outcomes are quite similar, and are therefore reported on jointly using the same measures.

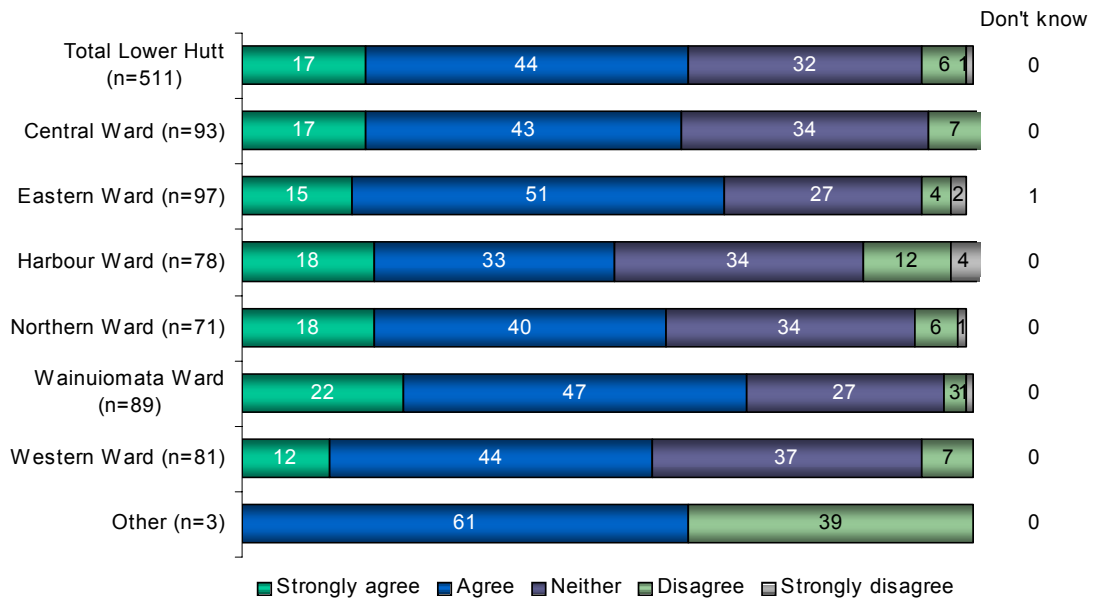
New Zealanders take considerable pride and enjoyment from nature. Cities face the constant challenge of achieving development while maintaining access to the natural environment.

The Quality of Life Survey 2006 included a question about feeling a sense of pride in the way a city looks and feels.

**Pride in City’s Look and Feel**

Three-fifths (60%) of Hutt City residents feel a sense of pride in their city, responding either *strongly agree* (17%) or *agree* (44%).

**Pride in City’s Look and Feel – By Ward (%)**



*Base: All respondents*

### ***Satisfaction with Roads and Gutters Being Free of Litter***

The Communitrak™ Survey included questions about roads and gutters being free of litter and, in 2006, included a series of questions about litter, graffiti, and the overall look of the city.

	<b>2003</b>	<b>2004</b>	<b>2005</b>	<b>2006</b>
Roads and Gutters Being Free of Litter	89%	84%	90%	-
Litter Control	-	-	-	87%
City overall being free of litter	-	-	-	81%
Overall look and feel of city	-	-	-	88%

Note: This question was split into two questions starting from 2006.

### ***Graffiti in Our City***<sup>35</sup>

The budget for graffiti removal in the 2005/06 financial year increased to \$150,000. This year Council's contractor removed 1730 graffiti "hits" totalling 3918.5 m<sup>2</sup> of area cleared of graffiti. During this time 701 "blanket permissions" to have graffiti removed were given by property owners.

### ***Satisfaction with the Sewerage System and Stormwater Drainage***

The Communitrak™ Survey included questions on satisfaction with Hutt City's sewerage system and the stormwater drainage system. The table below shows residents are more satisfied with wastewater treatment than they are with stormwater drainage. This is not surprising given the risk of flooding in some of the City's residential areas.

	<b>2003</b>	<b>2004</b>	<b>2005</b>	<b>2006</b>
Sewerage system	93	90	92	87
Stormwater drainage	79	65	58	64

---

<sup>35</sup> Hutt City Council's Annual Report 2006

## CONCLUSION

Most of the work carried out by Council that contributes to the achievement of community outcomes could be categorised as core business or “business as usual”, and is reflected in the structure of the organisation and the major activities undertaken. These include Libraries, Museums, Aquatics and Recreation, Parks and Reserves, Community Support, Property, Roading and Traffic, Water Supply, Wastewater, Stormwater, Solid Waste, Environmental Management, Emergency Management, Local Urban Design, Economic Development, Elected Members, Advice and Support, and Managing Services.

In addition, a range of programmes and projects that focus on the priorities identified through the community outcomes process are in place with Council’s partners in the community.

The progress made by the community during the 2003 – 2006 reporting period is summarised below.

**Clean air, water and land** – Residents’ perceptions indicated that air pollution and to a greater extent water pollution were of concern. Monitoring undertaken suggested that there may be air quality issues in Wainuiomata and particularly during the winter months, and that pollution incidents relating to odour were the most common incident type. Water quality monitoring also identified some issues, while drinking water quality was assessed as satisfactory with a very low level of risk when the water leaves the treatment plant.

**Everyone has affordable access to services that improve health** – Hutt City has fewer GPs per 100,000 of population compared with the rest of New Zealand but the introduction of Primary Health Organisations has made primary health care in the Hutt Valley considerably more affordable than in the past. The Meningococcal B campaign achieved well above the national average coverage rate. The number of beds available for elderly care has increased over the past four years, although the elderly population has also increased over this time.

**A city that is safe, friendly and welcoming, where people experience a sense of belonging** – The road toll for Hutt City has reduced. While recorded crimes appear to have risen between 2005 and 2006 these figures are still declining when compared to 2003 and 2004. Results from the Closed Circuit TV project in the CBD were very promising. The perception of safety in the community falls dramatically after dark. Sixty percent of residents agreed they felt a sense of community in their local neighbourhood. The majority of residents felt that greater cultural diversity made the city a better place. The number of residents gaining citizenship has increased considerably. Voter turnout decreased from the 2001 to the 2004 elections.

**Everyone has affordable access to excellent educational services** – In most categories the highest qualification level attained is higher than the national average. Hutt City compares favourably with its neighbours with the exception of Wellington City in terms of the percentage of school leavers qualified to attend university. Early childhood education attendance is higher than the national average, with the percentage of non-attendance in Hutt City lower than the national average.

**Everyone has a quality standard of affordable housing** – There has been a steady rise in the median house sale price in Hutt City, an increase in the mean rent for properties, and a decline in home affordability. Private landlords own the majority of rental housing stock in Hutt City but Housing New Zealand Corporation owns just under 30% of rental properties in the city, which guarantees income related rents for the most needy of Hutt City's residents.

**A local economy that is attractive to both business and residents** – The number of businesses in Hutt City has increased significantly with a considerable increase in the number of employees apart from those in the education sector. Unemployment has seen a sharp decline.

**Affordable access to community facilities that includes arts, cultural and recreational options** – Council provided facilities enjoy high levels of usage and satisfaction.

**A diverse natural environment that is accessible, enjoyable and safe** – Almost all residents find it easy to access a local park or other green space. A range of projects related to biodiversity have been started and are ongoing.

**A healthy balance between natural and built environments/A built environment that is attractive, safe and healthy** – Sixty percent of residents feel a sense of pride in the city, with 88% satisfied with the overall look and feel of the city.

These results provide a benchmark against which results in future years can be measured. They also highlight some areas that can be targeted in future with the objective of improving both residents' perceptions and actual performance.

Looking ahead to the 2006 to 2009 reporting period, the community outcomes for the city have been aligned with the Wellington Regional Outcomes. All existing community outcomes have been retained and some additional outcomes added.

There is an increased focus on the sustainability of the natural environment. The Waiwhetu Stream clean up has been identified as a priority, along with initiatives to improve perceptions of safety, including development of a Safe City Strategy, Crime Prevention Through Environmental Design and security patrols. Formal participation by youth, disabled and elder persons in the decision making that affects these groups will be encouraged. Use of technology including Smartlinx3, broadband and WiFi is being promoted.

The review of the District Plan will potentially have a major impact on the future development of the city for its residents and businesses. Affordable and healthy housing has become a priority. Council participation in the Wellington Regional Strategy and involvement with the Regional Economic Development Agency is expected to increase the prosperity of the region. Funding of community facilities has been allocated over the next ten years.

Efficient public transport has been identified as a priority, along with roading and cycleway development and investigation of the Cross Valley Link and CBD/Eastern Ring Route.

This report shows that Hutt City is moving towards the community outcomes that have been identified as a priority. However, these outcomes can only be achieved if lots of different organisations and individuals work towards them. Progress towards achieving the community outcomes will be monitored and reported on by the Council

and the results made available to inform the long term planning of the Council and its partners in the community.